

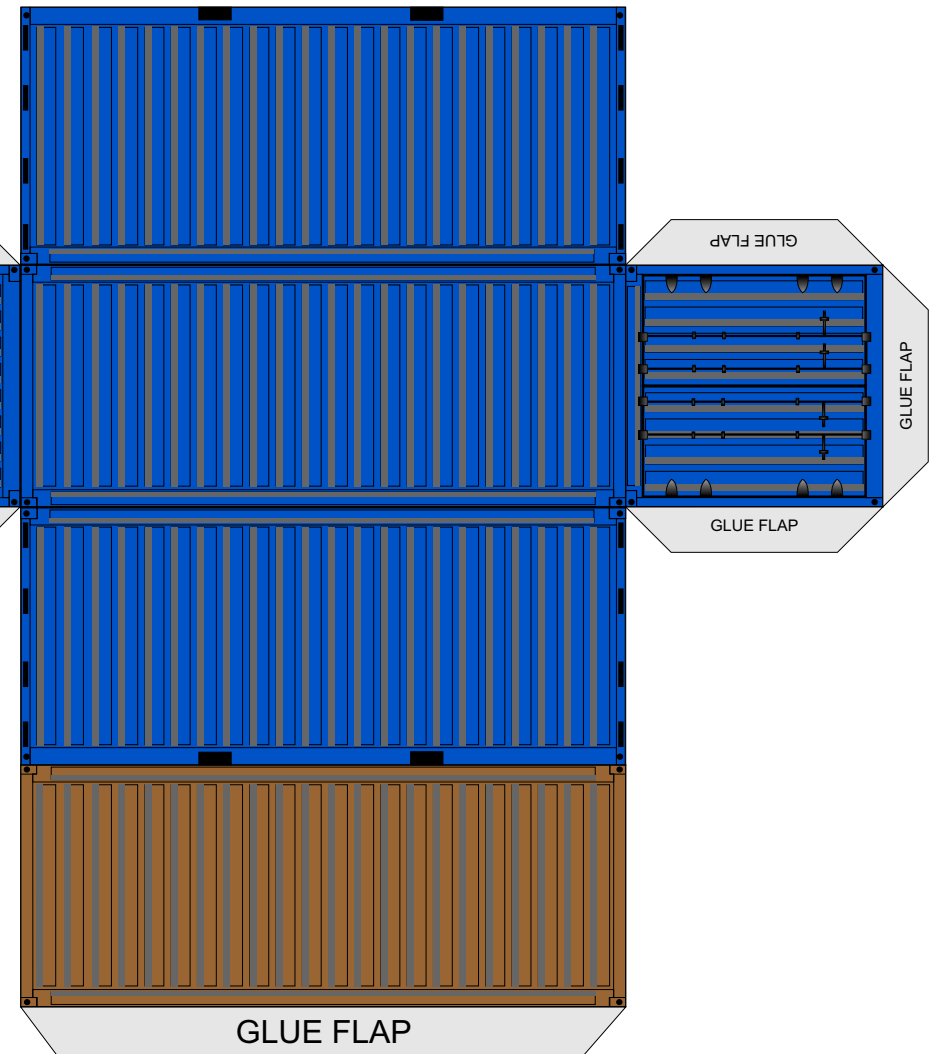
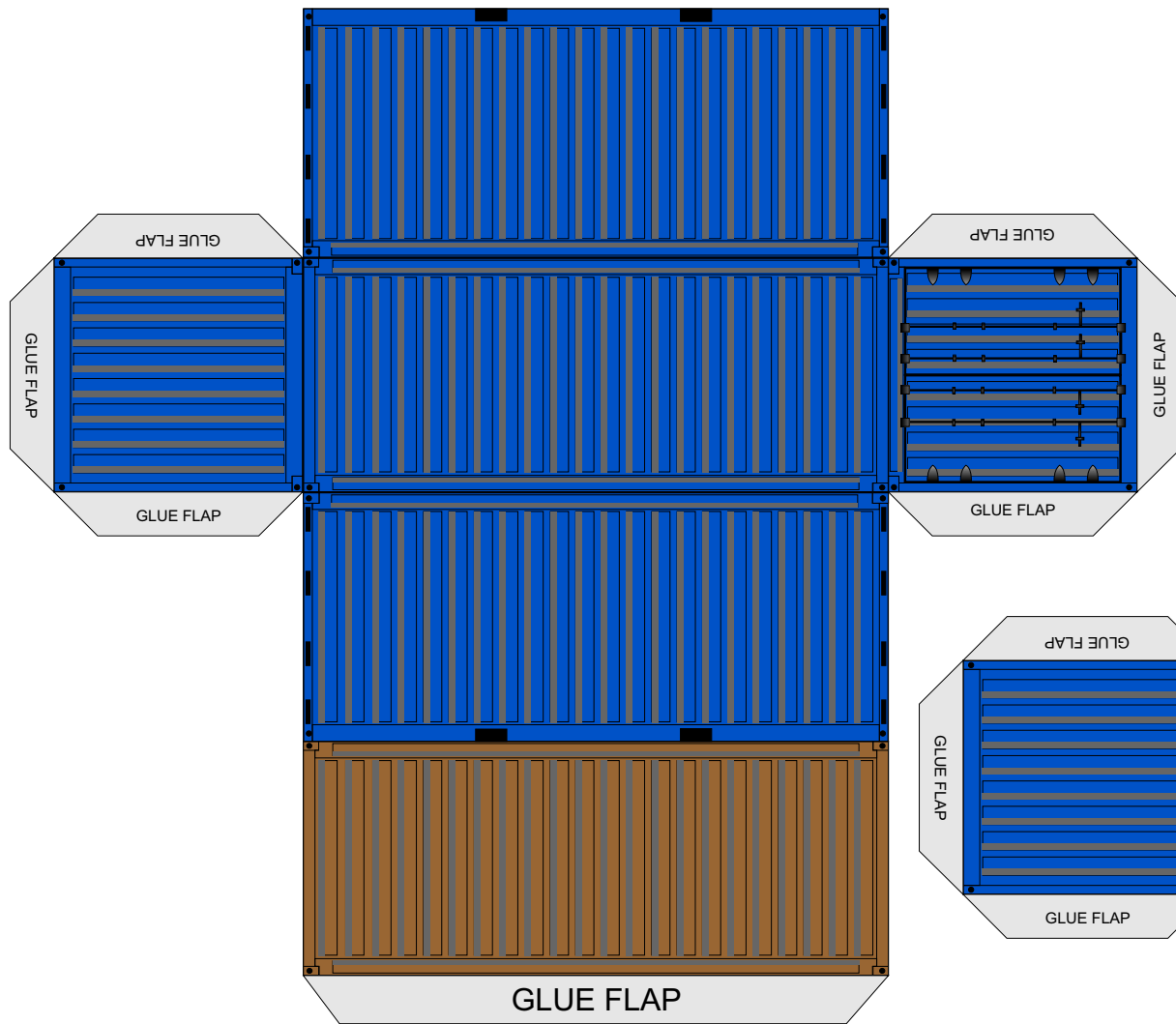
## TIP

For best results print onto matt photo paper  
around 120 - 180gsm



**Seaflair - 20' container**

© 2013 WORDSWORTH MODEL RAILWAY



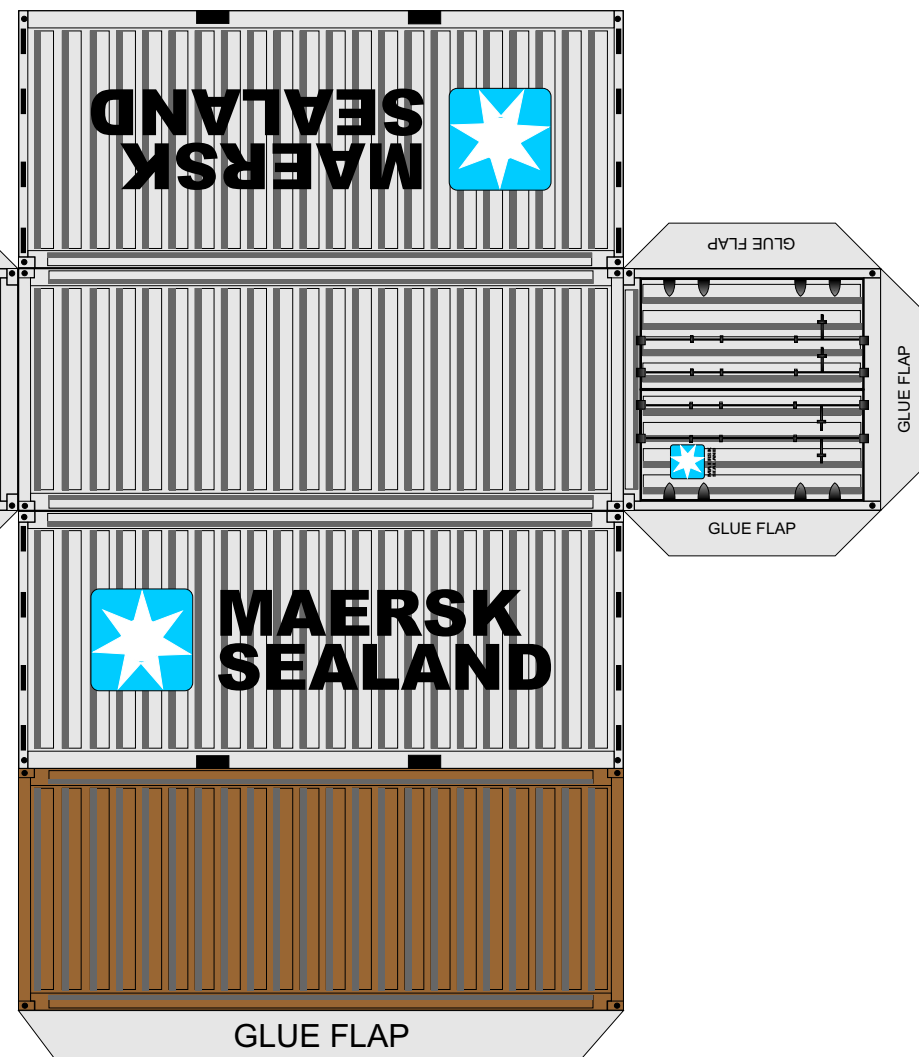
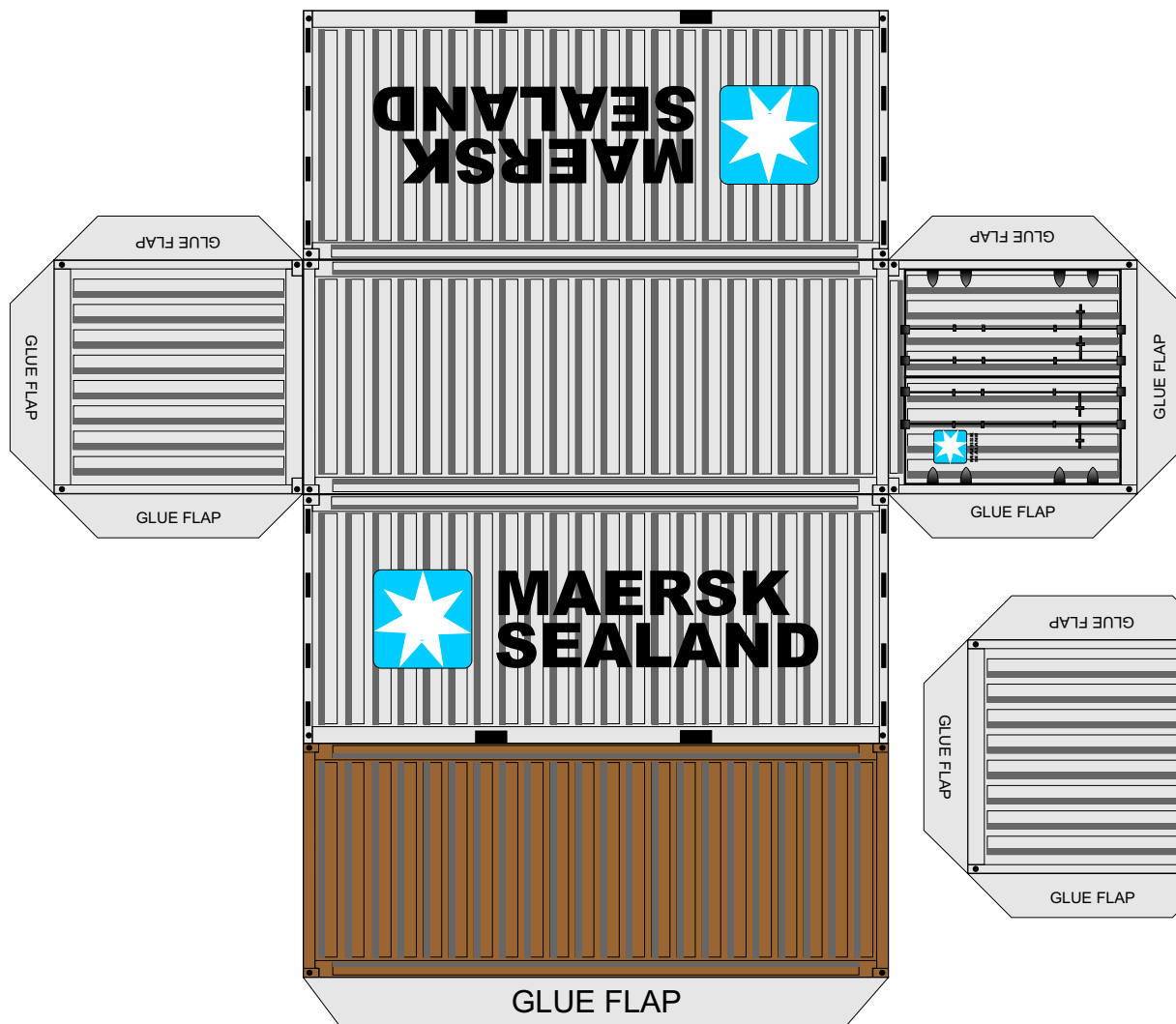
## TIP

For best results print onto matt photo paper  
around 120 - 180gsm



**Basic Blue - 20' container**

© 2013 WORDSWORTH MODEL RAILWAY



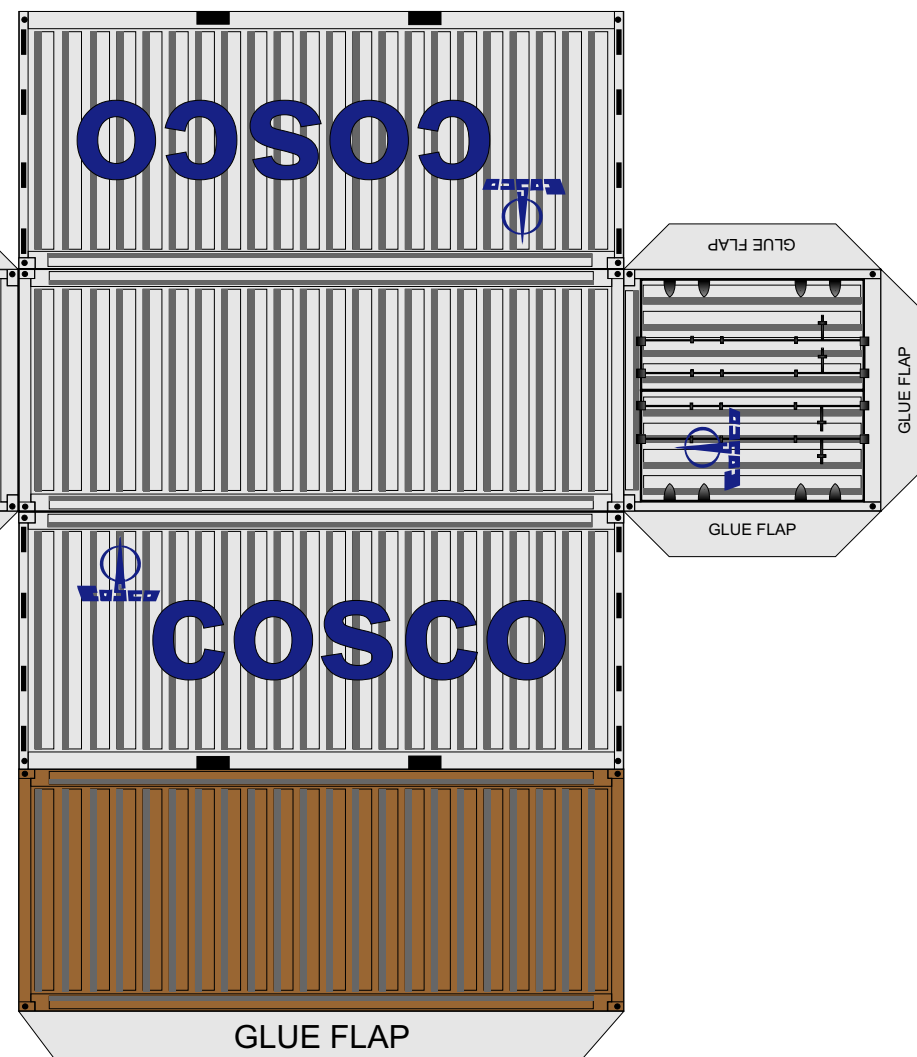
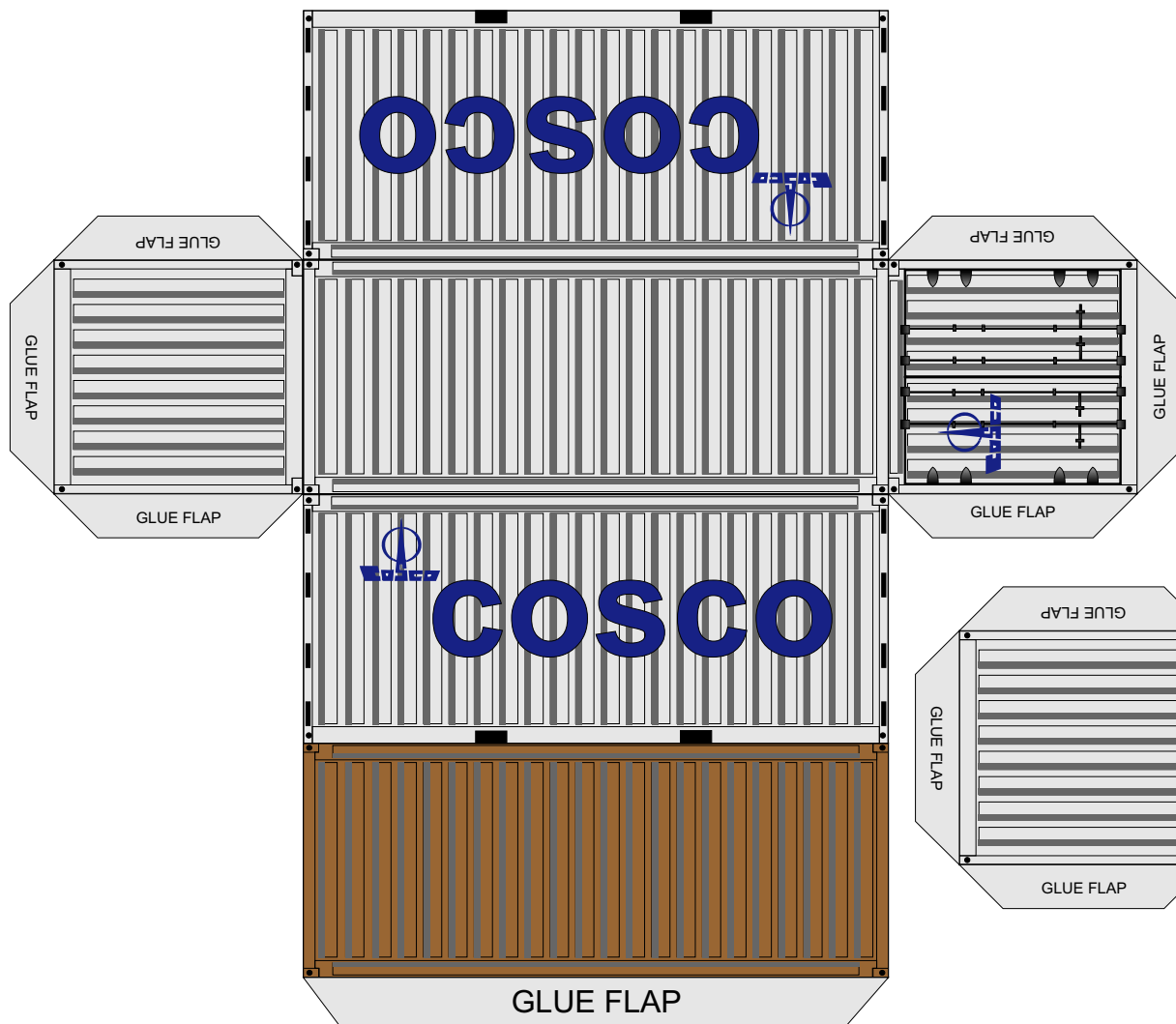
## TIP

For best results print onto matt photo paper  
around 120 - 180gsm



**Maersk Sealand - 20' container**

© 2013 WORDSWORTH MODEL RAILWAY



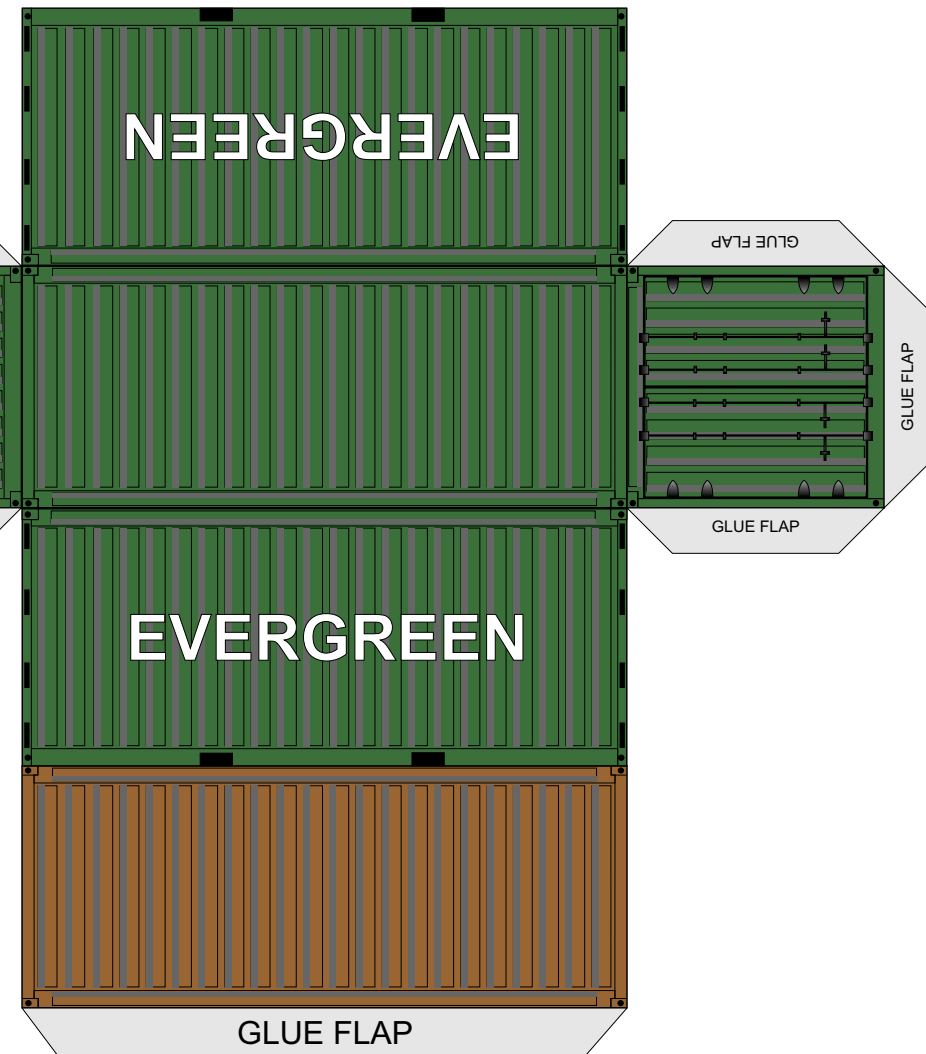
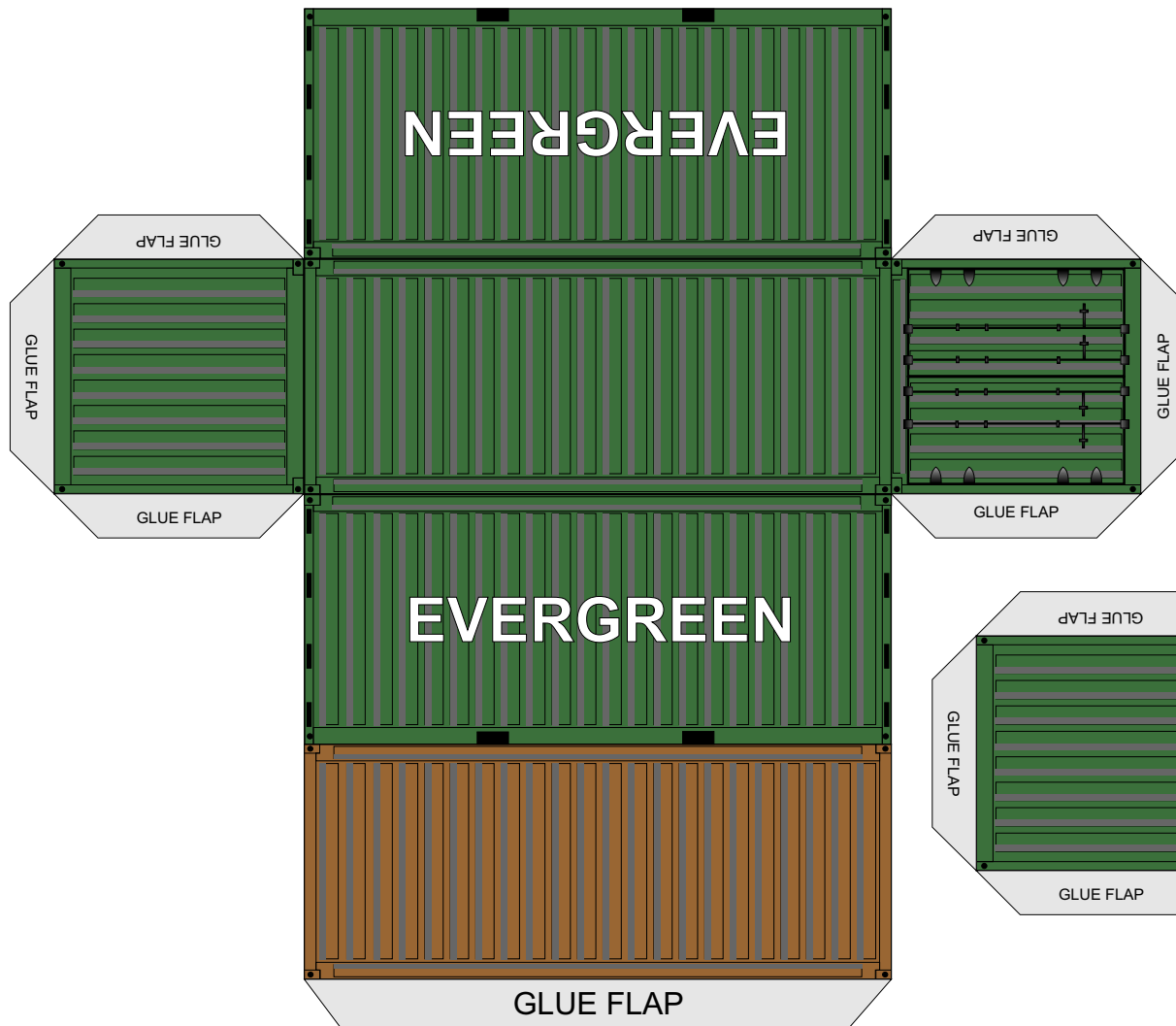
## TIP

For best results print onto matt photo paper  
around 120 - 180gsm



**COSCO - 20' container**

© 2013 WORDSWORTH MODEL RAILWAY



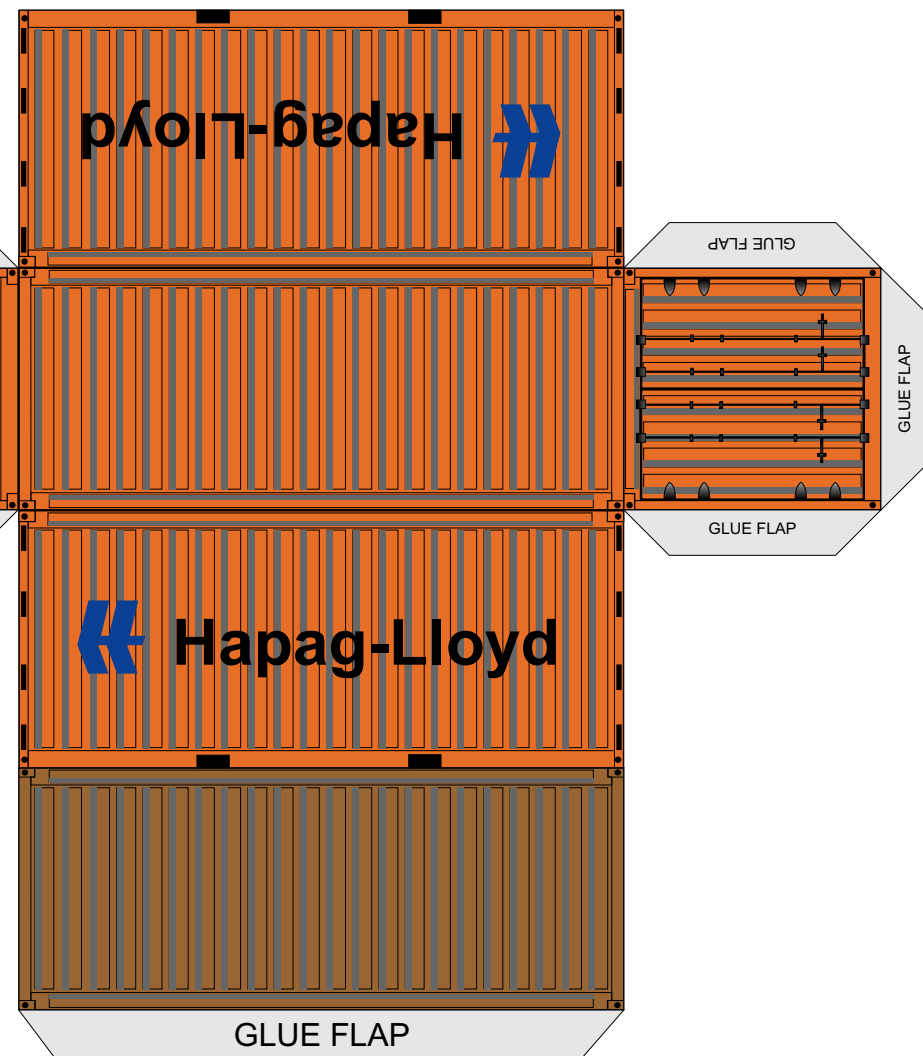
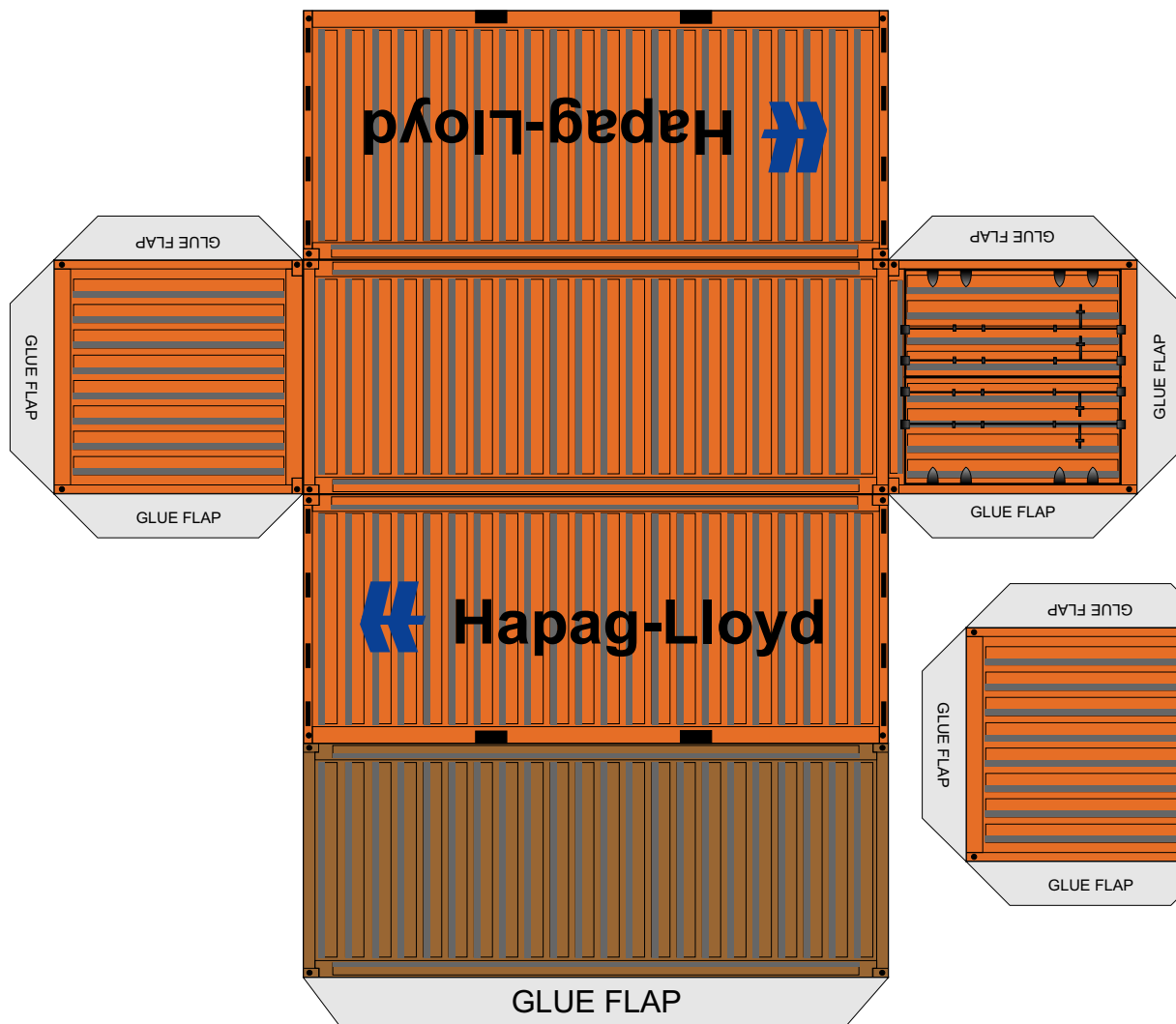
## TIP

For best results print onto matt photo paper  
around 120 - 180gsm



**Evergreen - 20' container**

© 2013 WORDSWORTH MODEL RAILWAY



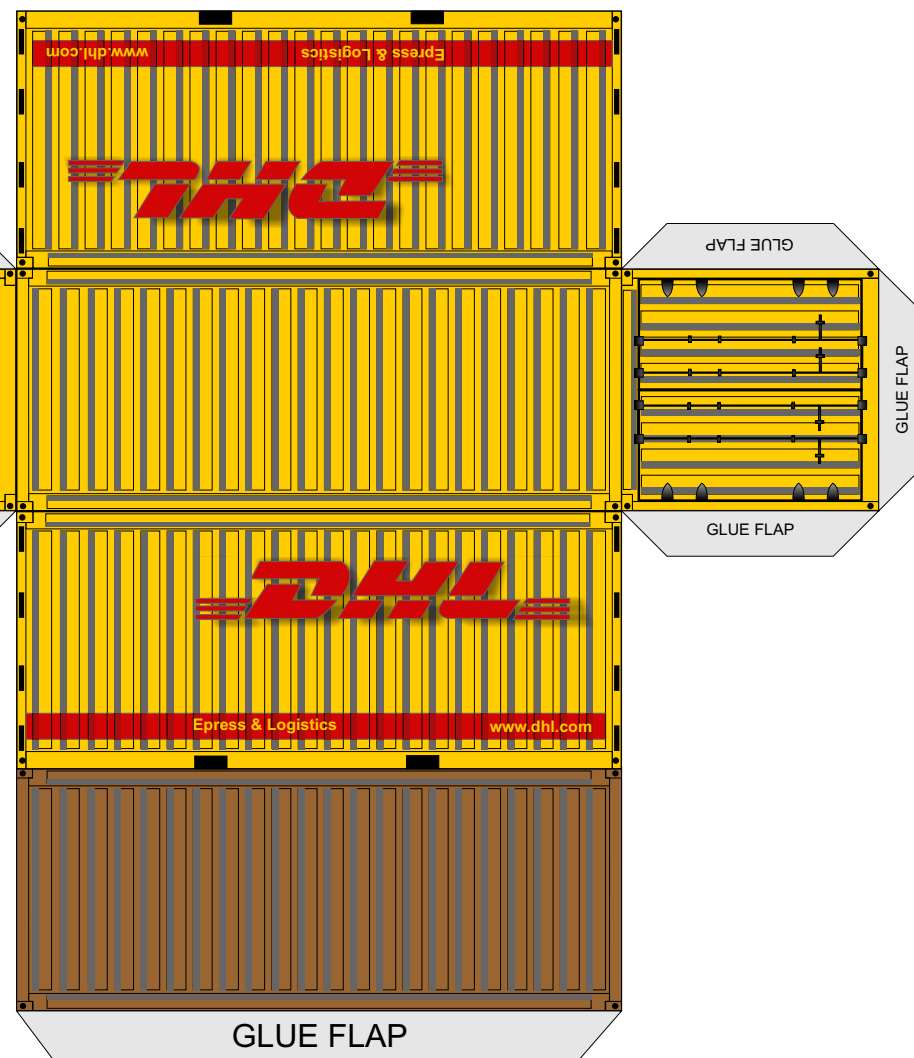
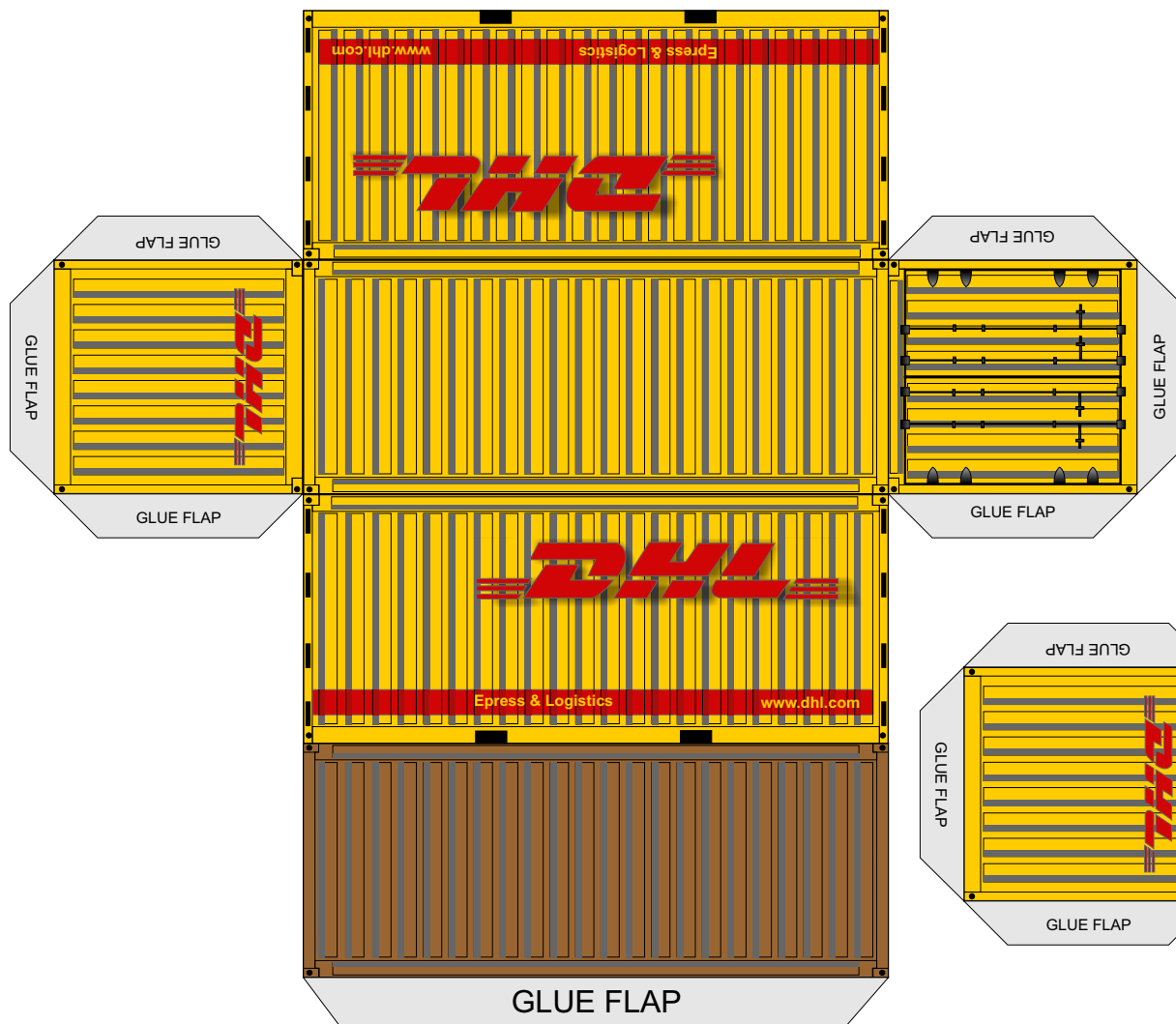
## TIP

For best results print onto matt photo paper  
around 120 - 180gsm



**Hapag-Lloyd - 20' container**

© 2013 WORDSWORTH MODEL RAILWAY



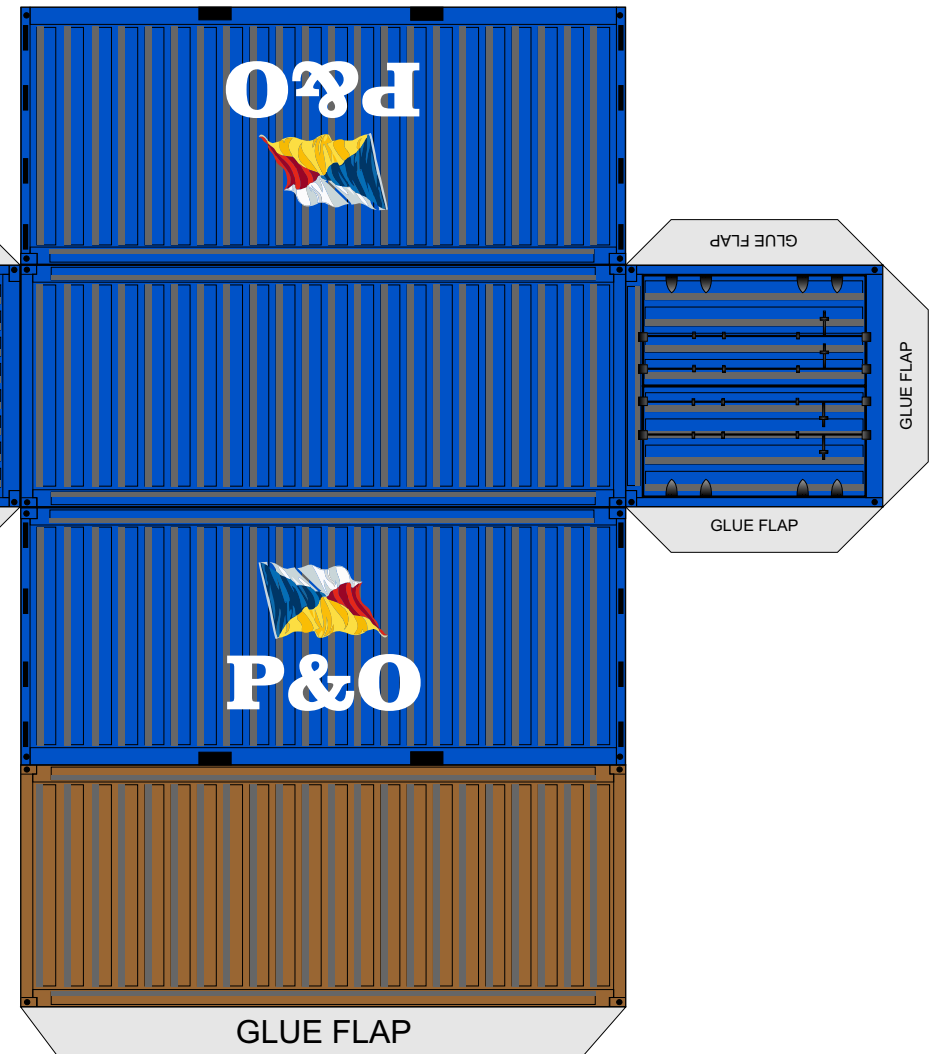
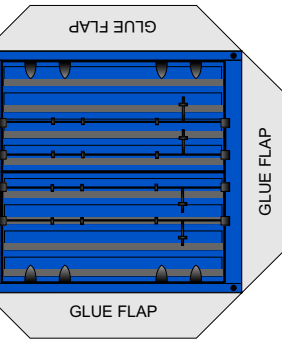
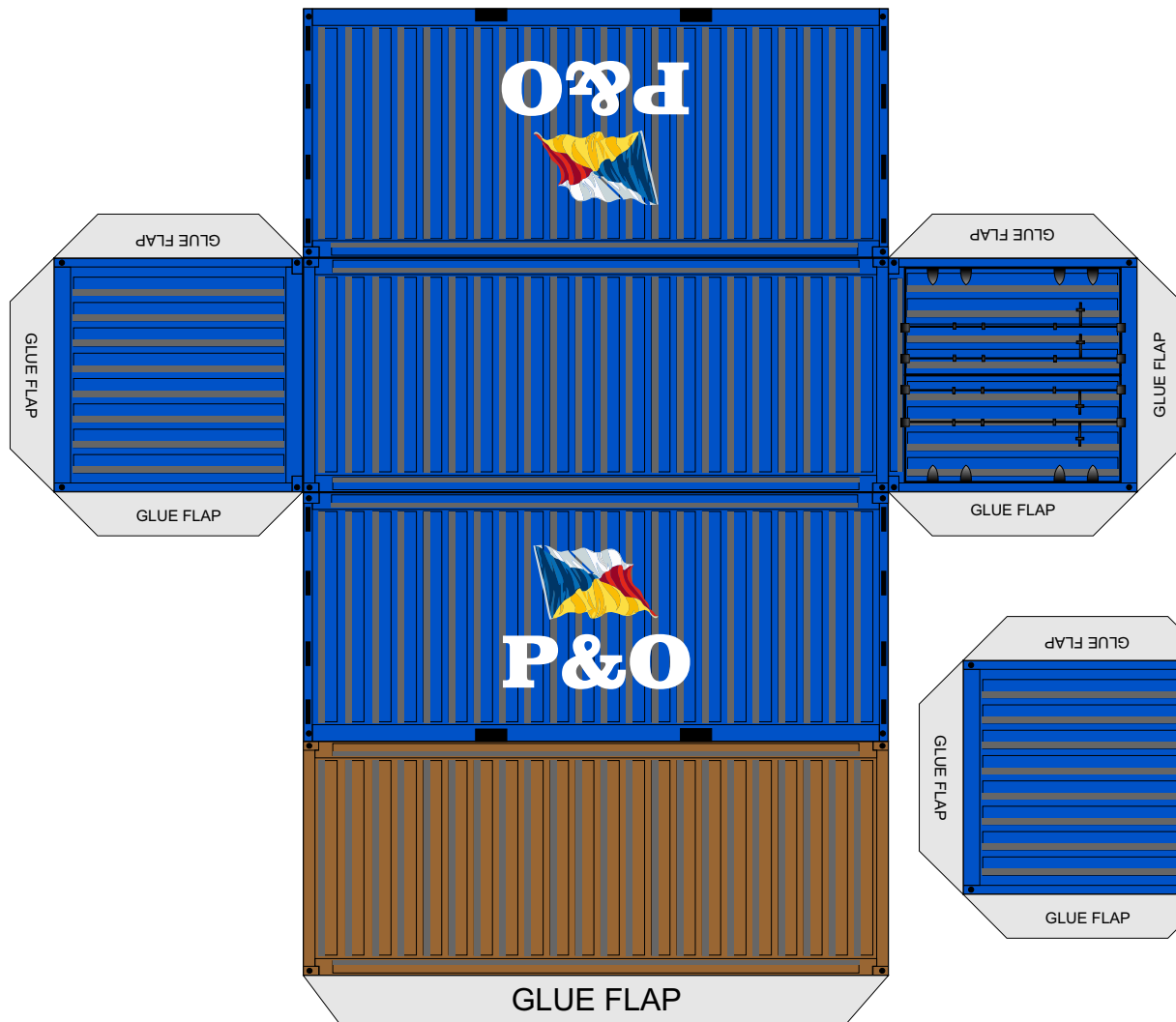
## TIP

For best results print onto matt photo paper around 120 - 180gsm



**DHL - 20' container**

© 2013 WORDSWORTH MODEL RAILWAY



## TIP

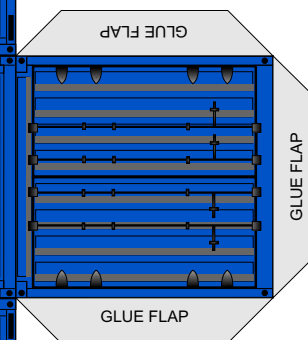
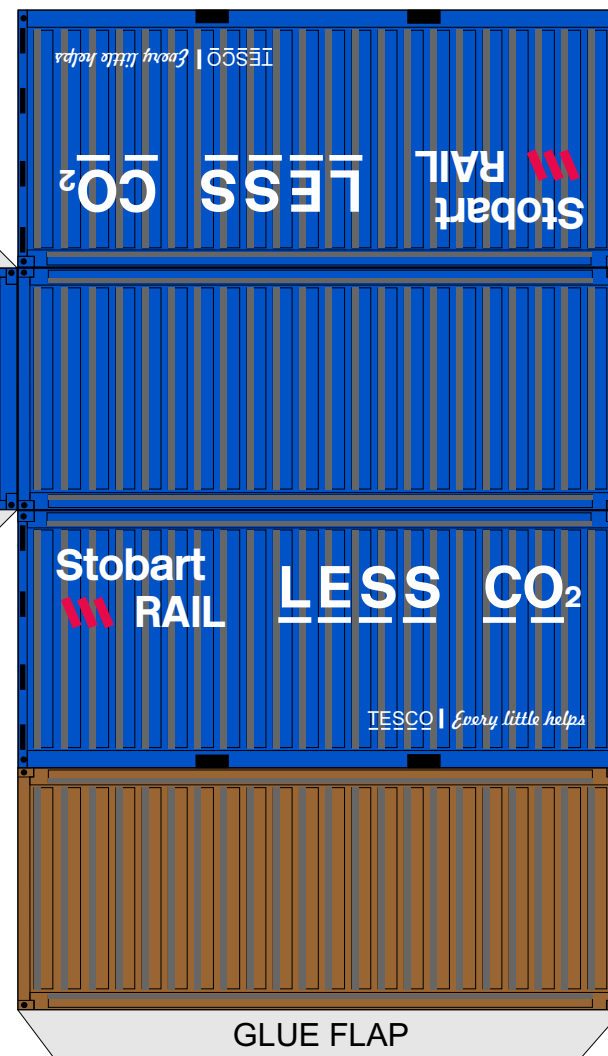
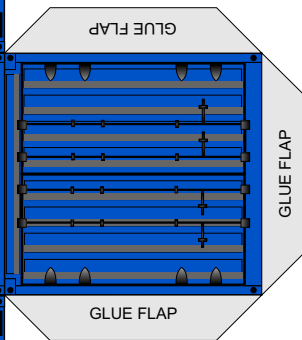
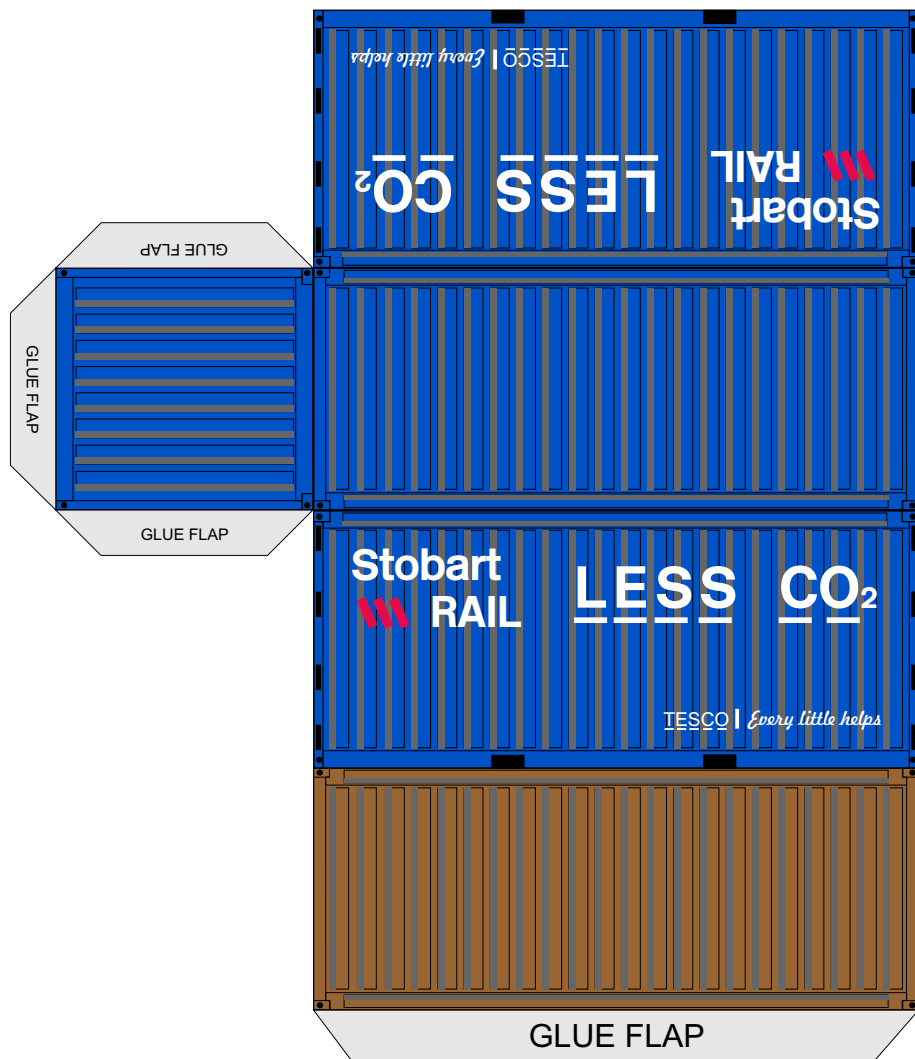
For best results print onto matt photo paper  
around 120 - 180gsm



**P&O - 20' container**

© 2013 WORDSWORTH MODEL RAILWAY





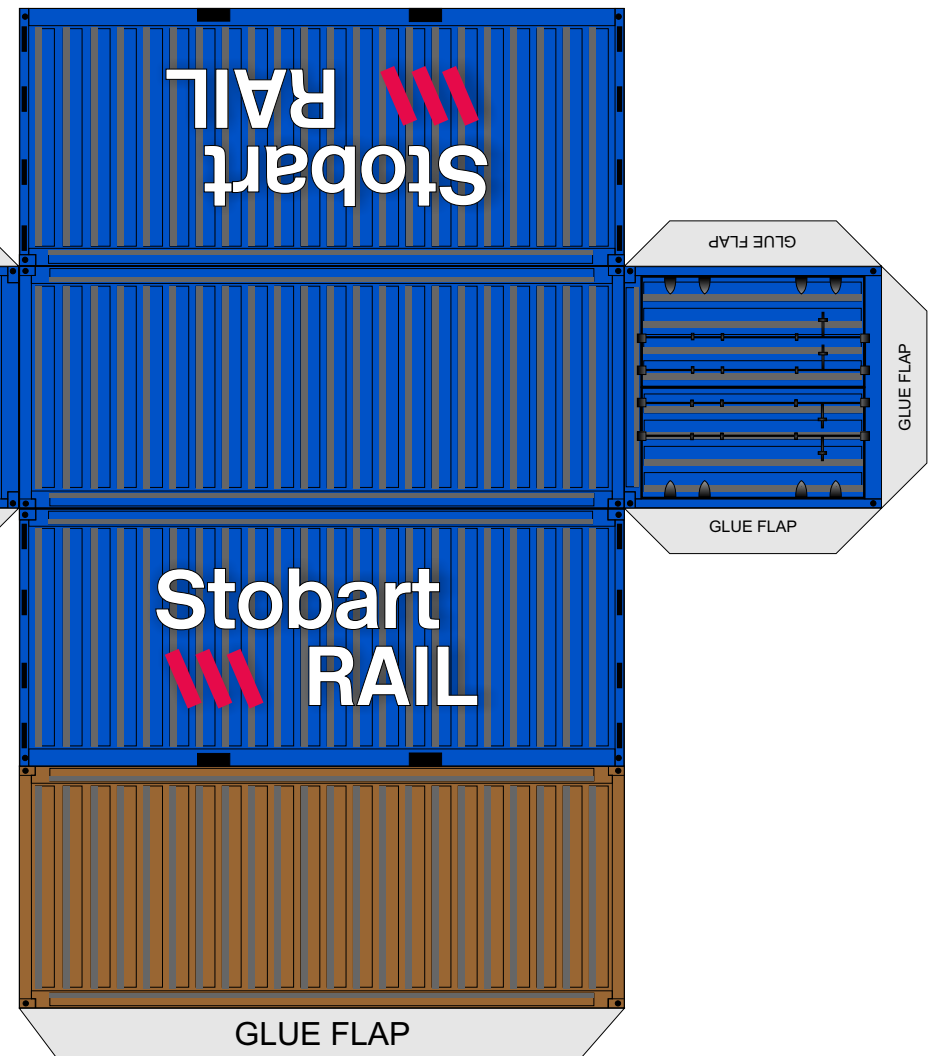
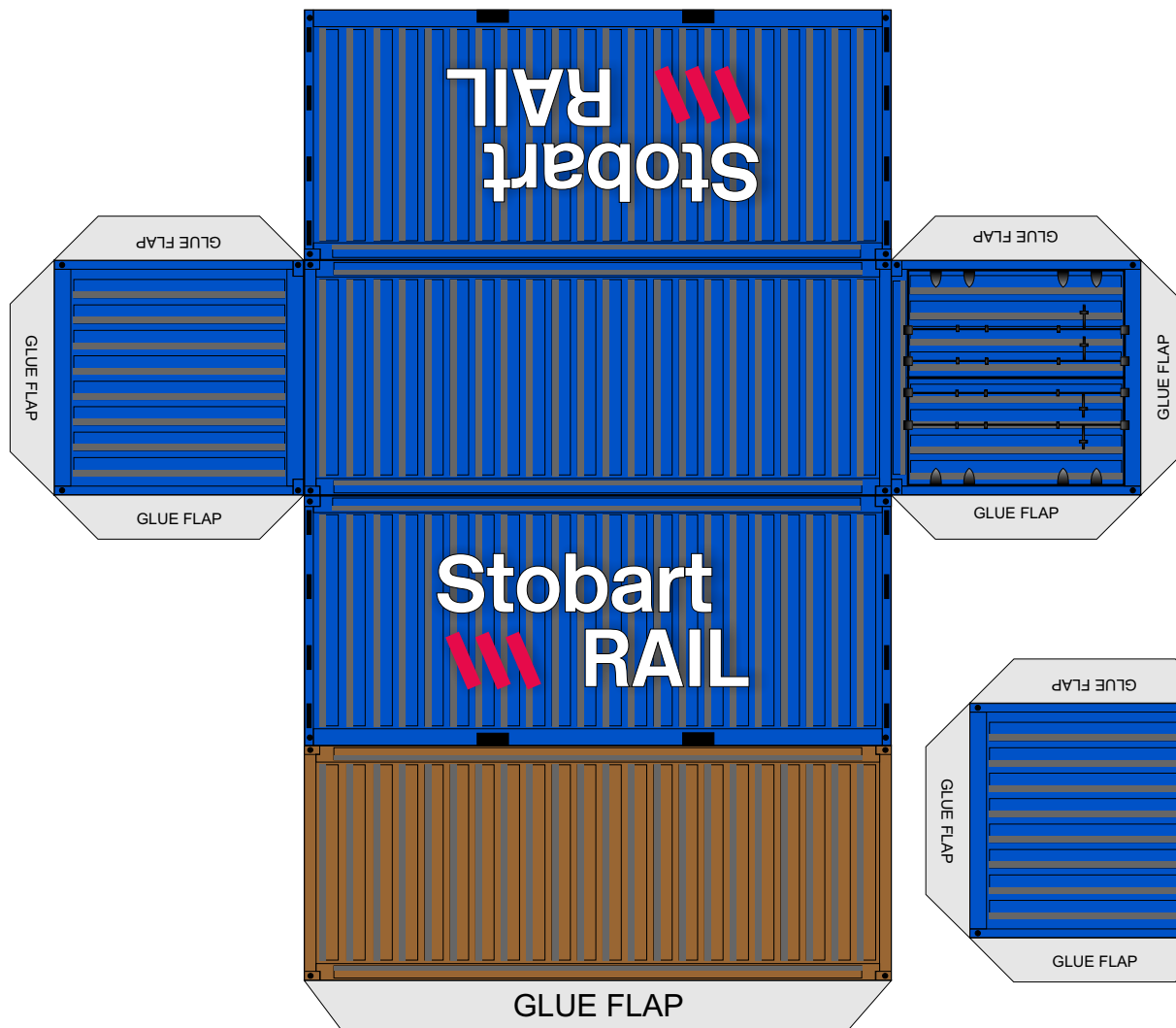
## TIP

For best results print onto matt photo paper  
around 120 - 180gsm



**Tesco - 20' container**

© 2013 WORDSWORTH MODEL RAILWAY



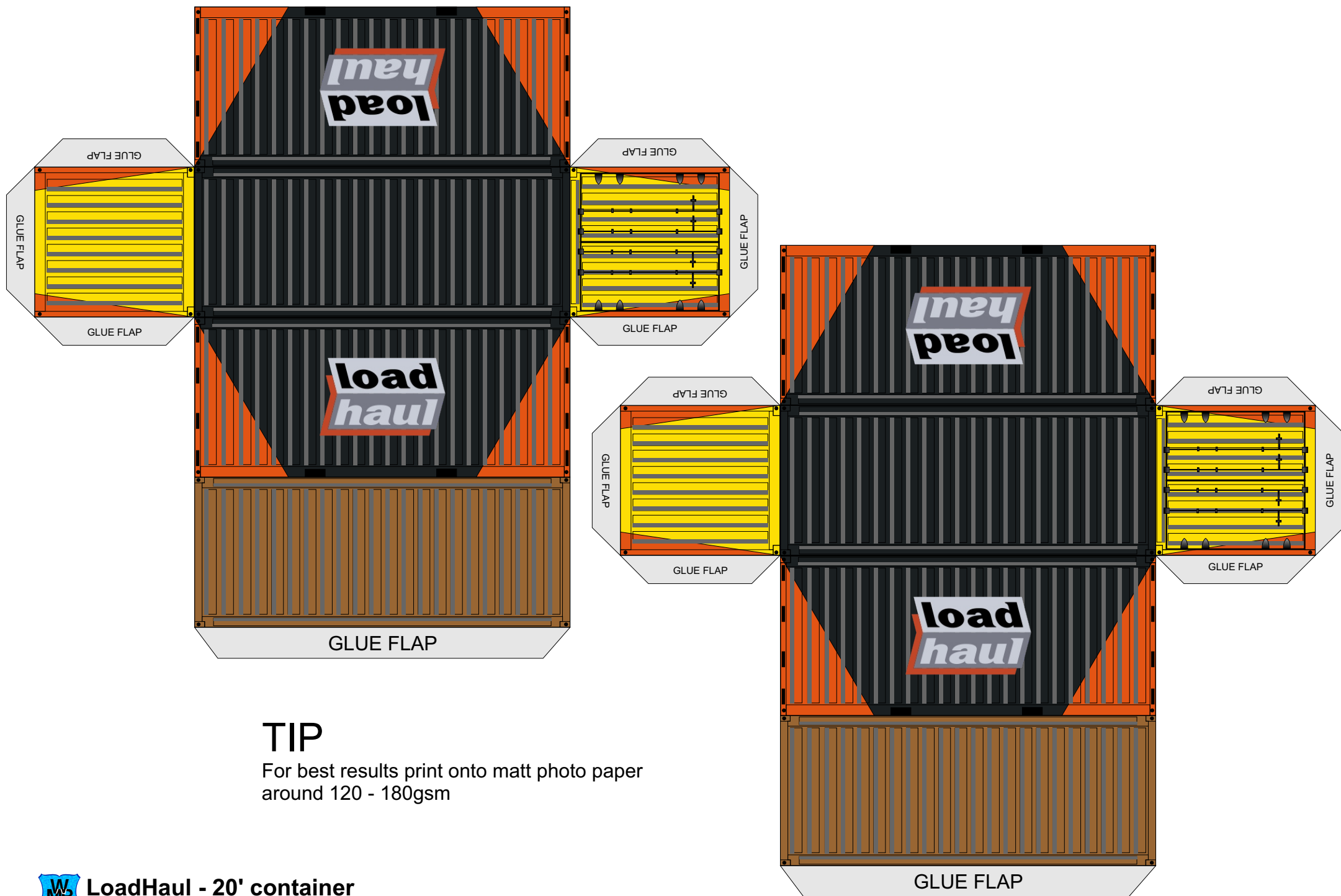
## TIP

For best results print onto matt photo paper  
around 120 - 180gsm



**Stobart Rail - 20' container**

© 2013 WORDSWORTH MODEL RAILWAY



## TIP

For best results print onto matt photo paper  
around 120 - 180gsm



**LoadHaul - 20' container**

© 2013 WORDSWORTH MODEL RAILWAY